



**Describe your
energy**



**What is
your strength?**



**What is your
reading style?**

GETTING TO
KNOW YOU



DECK
INTERVIEW



**What will we
learn together?**



**What are your
limitations?**



**How deep
will we go?**

WHEN MY SOUL WHISPERED

MIND | BODY | SPIRIT

by *Melissa Selvaggio*

WHAT IS A DECK INTERVIEW?

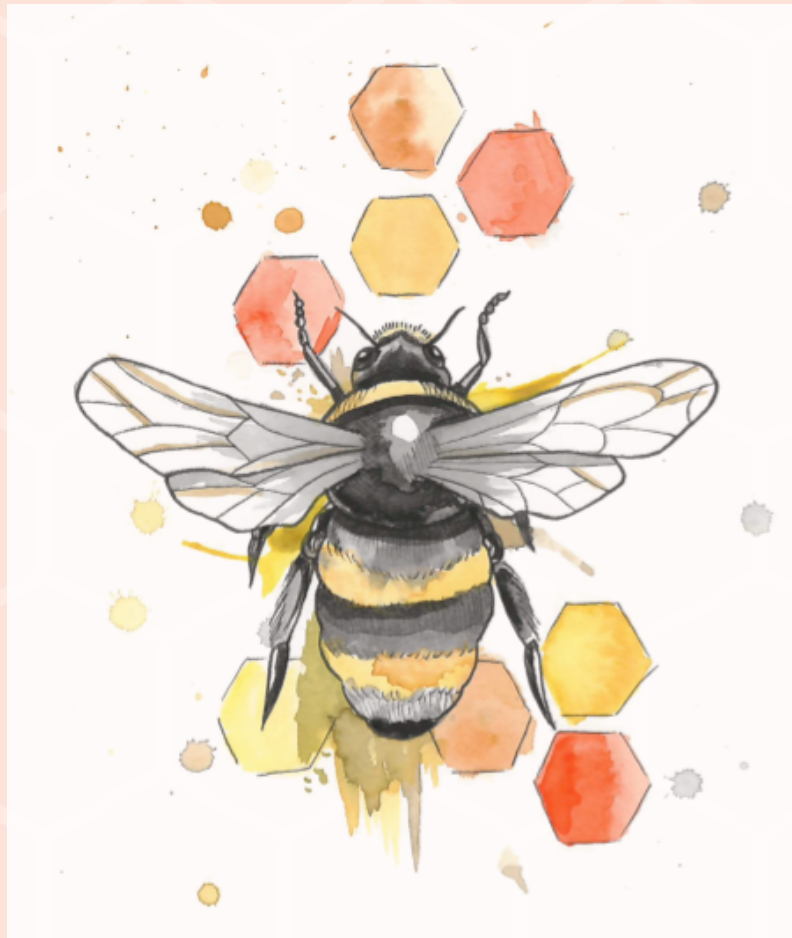
Many people often describe their decks as having inherent attributes, or even personalities. Have you ever heard someone say "my cards really gave me a slap in the face with that reading", or "this deck is so cheeky!". Often, a deck can have a certain reading style, or particular characteristics that make it perfect for specific uses. This is where you might find yourself reaching for a specific deck every time you do a relationships or career reading, or a different deck for inner work. Each deck may speak to you in a different way, or with a different voice, and often this varies from person to person. A deck interview is a handy way of breaking the ice with your new deck. In a similar way to a job interview, you will ask your deck a series of questions in order to find out more about its personality and working style. It's a great way to start to find out more about your new deck and how you might be best suited when it comes to working together. I designed the 'Getting To Know You' deck interview spread around the Six Dimensions of Personality Model by Tessie Rodriguez that posits personality as six core dimensions - energy, direction, values, depth, consciousness and strength, and while that may *seem* a little serious, it's really just a neatly packaged framework to build the spread around.

You can use this same guide for many different deck interviews. Simply reprint pages 3 - 5 and re-use with each new deck.

WHEN MY SOUL WHISPERED

MIND | BODY | SPIRIT

by Melissa Selvaggio



@WHENMYSOULWHISPERED



WHENMYSOULWHISPERED.COM

© 2018 MELISSA SELVAGGIO